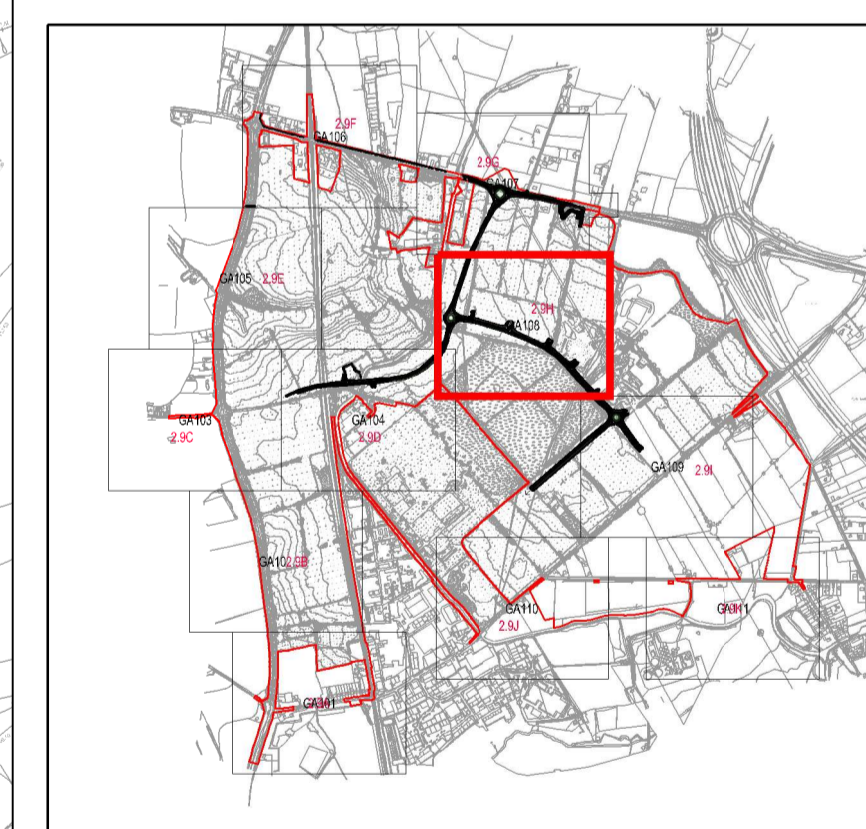


- KEY**
- ORDER LIMITS
 - FOOTWAY / CYCLEWAY
 - ROAD
 - VERGE / GRASS
 - UNADOPTED HIGHWAY
 - UNADOPTED FOOTWAY / CYCLEWAY
 - UNADOPTED VERGE / GRASS
 - TACTILE PAVING

NOTE:

LIMITS OF DEVIATION SHOWN ON THE WORKS PLANS (DOCUMENT SERIES 2.2) AND SET OUT IN ARTICLE 4 OF THE DEVELOPMENT CONSENT ORDER.

POSITION OF PLOT ACCESSES IS INDICATIVE



- Revisions
- F - 05/06/2018 - RED LINE UPDATED
 - E - 08/05/2018 - MINOR AMENDMENTS
 - D - 20/03/2018 - MINOR AMENDMENTS
 - C - 02/03/2018 - RED LINE UPDATED
 - B - 06/12/2017 - BUS STOPS AMENDED, CENTRAL ISLAND ADDED
 - A - FIRST ISSUE

Project THE WEST MIDLANDS RAIL FREIGHT INTERCHANGE ORDER 201X	
Drawing Status SUBMISSION	
Drawing Title GENERAL ARRANGEMENT PLAN	
108	
Regulation 5 (2) (c)	Document 2.9H
Drawn NW	Date MAY 2018
Scale 1:1000	Reviewed JF
Drawing No. WSP-70001979-GA-108	
Rev. F	